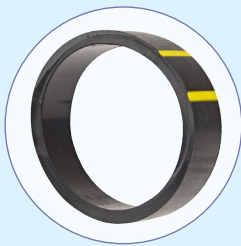


Jain Tough Hose - Twin-Line®



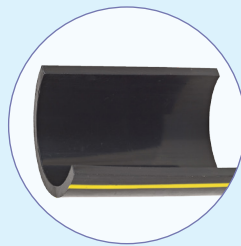
Rodent Deterrent*

Features & Benefits



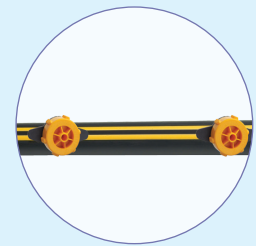
Manufactured with Premium Grade LLDPE material

Makes the tubing durable and gives best environmental stress crack resistance (ESCR).



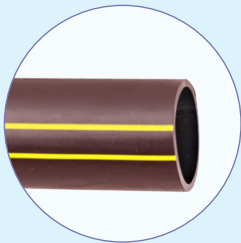
Close Dimensional Tolerances

Excellent Characteristics of LLDPE provided durable tubing with close dimensional tolerances.



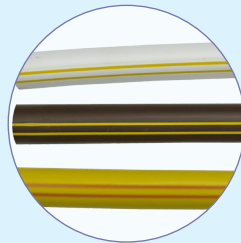
No Environmental Effects

UV stabilised tubing does not have any environmental effects. .



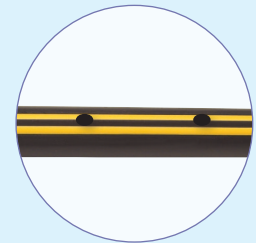
Marked with Two Parallel Yellow Stripes 'Twin-Line®'

Symbol of quality. It also helps for proper positioning of the dripper.



Flexibility in colour selection

Black - Standard colour for agriculture,
Brown - for landscape application,
White - for greenhouse application,
Purple - for reclaimed water application.



Ease of Installation

Available in prepunched option at specified spacings. Standard punch size 2.5mm, other punch size can be supplied on demand.

Jain Tough Hose - Twin-Line®

Additional Features

- Twin-Line® also available in red stripes for rat repellent option.
- Pre-punched tubing at specified distance and hole size can be supplied on demand (standard hole size is 2.9 mm)
- Manufactured as per IS / ISO / ASAE / AS / ASTM standards
- Each batch is tested for the following parameters:
 - Dimensional tolerances.
 - Short term & long term hydraulic pressure.
 - Heat reversion.
 - Carbon black content.
 - Environmental stress crack resistance (ESCR).
 - Tensile Strength and Elongation.

Applications

- Used as laterals in drip irrigation systems
- Used in greenhouses for high pressure foggers, spray heads and jets application

Specifications

Nominal Diameter : 12 mm to 32 mm

Working Pressure : 2.0 kg/cm² to 4 kg/cm²

Standards : IS / ISO / ASAE / AS / ASTM

Jain Tough Hose-Twin-Line® Drip Polytube as per IS:12786

Nominal OD	Inside Diameter	Min. Wall Thickness	Std. Coil Length	Minimum Weight	
mm	mm	mm	m	g/m	lbs/100ft
Class- I					
12	10.8	0.6	100, 250, 500	20.09	1.35
16	14.4	0.8	100, 250, 400	35.72	2.39
20	18.2	0.9	250	50.50	3.38
25	22.6	1.2	250	83.90	5.62
32	29.0	1.5	100, 250	134.40	9.00
Class- II					
12	10.2	0.9	100, 250, 500	29.35	1.97
16	13.8	1.1	100, 250, 400	48.15	3.23
20	17.6	1.2	250	66.28	4.44
25	21.6	1.7	250	116.37	7.80
32	28.0	2.0	100, 250	176.27	11.81
Class- III					
12	9.6	1.2	100, 250, 500	38.07	2.55
16	13.2	1.4	100, 250, 400	60.05	4.02
20	17.0	1.5	250	81.52	5.46
25	20.8	2.1	250	141.28	9.47
32	27.0	2.5	100, 250	216.66	14.52

Jain Tough Hose - Twin-Line®

Nom. Dia.	Inside Diameter		Min. Wall Thickness		Max. Working Pressure		Std. Coil Length		Minimum Weight	
	mm	inch	mm	inch	kg/cm ²	psi	m	ft	g/m	lbs/100ft
13	13	0.512	0.95	0.037	3.7	52	500	1640	38.93	2.61
13	13	0.512	1.10	0.043	4.2	59	500	1640	45.56	3.05
13	13	0.512	1.40	0.055	5.1	72	500	1640	59.23	3.97
16	16	0.630	0.90	0.035	3.0	42	300	984	44.68	2.99
16	16	0.630	1.10	0.043	3.5	49	300	984	55.26	3.70
16	16	0.630	1.40	0.055	4.3	61	300	984	71.56	4.79

Jain Tough Hose - Twin-Line® as per AS-2698-1 (Type 30)

Nom. Dia.	Inside Diameter		Min. Wall Thickness		Std. Coil Length	Minimum Weight	
	mm	inch	mm	inch		g/m	lbs/100ft
10	09.8	0.385	1.0	0.039	300	31.73	2.12
13	12.7	0.500	1.2	0.047	300	49.00	3.28
16	15.8	0.622	1.2	0.047	200	59.95	4.02
19	18.9	0.744	1.3	0.051	200	77.15	5.17
25	25.2	0.992	1.5	0.059	200	127.65	8.55
32	31.5	1.240	2.0	0.078	100	196.80	13.19

Note:

- Inside diameter based tubing.
- Jain Tough Hose - Twin Line® as per AS-2698-1 can also be supplied with Type 50 material.

Ordering Specifications

T	X	XX	XXX	XXX
	0 - Outside Diameter Based Tubing	Nominal Diameter in mm	for Drip Polytube as per IS 12786	Standard coil length in meter
	1 - Inside Diameter Based Tubing		1 - Pressure Class1 2 - Pressure Class2 3 - Pressure Class3	
			for other tubing, Wall Thickness in mm x 100	

Example: T113140500 - This code refers to Jain Tough Hose of nominal diameter 13 mm and minimum wall thickness of 1.4 mm with standard coil length of 500 m.

Note:

- Please refer standard specification table while ordering.
- Jain Tough Hose in any other wall thickness & / or coil length can be manufactured and supplied as a special order.
- For ordering Jain Tough Hose with Rodent Deterrent features change the above code as T113140R500.
- For ordering Jain Tough Hose white colored tubing, please change the code as T113140500W.
- For ordering Jain Tough Hose brown colored tubing, please change the code as T113140500B.
- For ordering Jain Tough Hose purple colored tubing, please change the code as T113140500P.
- For prepunch Jain Tough Hose change the code as,

T113140500 PXX _____
Hole Spacing in cm.